

A study on the significance of cardiac CT: Atherosclerosis to acute coronary syndrome

Dr. A Rajasimha

Scholar, Victoria Global University, Delhi, India

Abstract

Coronary computed tomographic angiography (CCTA) is a robust non-invasive method to assess coronary artery disease (CAD). Qualitative and quantitative assessment of atherosclerotic coronary stenosis with CCTA has been favorably compared with invasive coronary angiography (ICA) and intravascular ultrasound (IVUS). Importantly, it allows the study of preclinical stages of atherosclerotic disease, may help improve risk stratification and monitor the progressive course of the disease. The diagnostic accuracy of CCTA in the assessment of coronary artery bypass grafts (CABG) is excellent and the constantly improving technology is making the evaluation of stents feasible. Novel techniques are being developed to assess the functional significance of coronary stenosis.

The excellent negative predictive value of CCTA in ruling out disease enables early and safe discharge of patients with suspected acute coronary syndromes (ACS) in the Emergency Department (ED). In addition, CCTA is useful in predicting clinical outcomes based on the extent of coronary atherosclerosis and also based on individual plaque characteristics such as low attenuation plaque (LAP), positive remodeling and spotty calcification. In this article, we review the role of CCTA in the detection of coronary atherosclerosis in native vessels, stented vessels, calcified arteries and grafts; the assessment of plaque progression, evaluation of chest pain in the ED, assessment of functional significance of stenosis and the prognostic significance of CCTA.

Keywords: Coronary computed tomographic angiography (CCTA), acute coronary syndrome (ACS), coronary artery disease (CAD), vulnerable plaques, atherosclerosis

Introduction

Coronary artery disease (CAD) is the leading cause of morbidity and mortality worldwide and makes up for more than half of all cardiovascular events in men and women <75 years of age in United States. Atherosclerosis is a chronic disease characterized by plaque formation inside the arteries as a result of complex interaction between lipoproteins, endothelium and inflammatory cells. All the cardiovascular risk factors contribute to the pathogenesis by aggravating the underlying inflammation. The development and progression of atherosclerosis is likely determined, in part, by other still unidentified risk factors and genetic host susceptibility. It initially begins as fatty streak and grows over many years to become advanced atherosclerotic plaque. In majority of men and women with coronary atherosclerosis, the initial presentation is with acute myocardial infarction or sudden cardiac death and two thirds of acute coronary syndromes (ACS) are due to disruption of atherosclerotic plaque.

The features of ruptured plaques on histopathology include large plaque volumes and large necrotic cores that are covered by thin fibrous cap (<65 μm), and typically infiltrated with monocytes and macrophages. Plaques vulnerable to rupture are termed thin cap fibroatheroma (TCFA) which share similar histopathological characteristics as ruptured plaques except that the fibrous caps are still intact. The term "vulnerable plaque" has therefore been used to describe rupture prone plaques before an event occurs.

Studies of disrupted plaques with invasive intravascular imaging such as intravascular ultrasound (IVUS) have identified imaging characteristics of plaque vulnerability. These features include positive remodeling, large lipid core and spotty calcification. Intravascular techniques are however

limited by high cost and invasive nature of the test. It is therefore desirable to have a non-invasive imaging technique which can assess plaque burden and detect vulnerable plaque. Coronary computed tomographic angiography (CCTA) has established itself as a non-invasive modality with high sensitivity and high negative predictive value for detecting coronary artery stenosis. In addition, CCTA permits the assessment of coronary atherosclerotic plaque morphology and composition in good agreement with IVUS.

CCTA is performed on multi-detector CT (MDCT) systems after the injection of iodine contrast media for opacification of lumen. Current generation scanners range from 64-320 detector rows with spatial resolution of approximately 230 to 625 μm and temporal resolution of approximately 75 to 175 ms. The spatial resolution of latest generation CT scanners is marginally lower than the 100 and 200 μm afforded by IVUS and invasive coronary angiography (ICA) respectively. The improved temporal resolution of new generation scanners permit scan acquisition for patients with atrial fibrillation and higher heart rates with preserved image quality. Plaques are identified on CCTA as any discernible structure outside the lumen that is either calcified or has attenuation value less than the lumen. They are usually classified into three categories: non-calcified, mixed or calcified.

Retrospectively ECG-gated 64 detector CCTA require radiation exposure of 7 to 21 millisieverts (mSv). Over the years, various advances in imaging techniques have enabled moderate reduction in radiation. These techniques include using retrospective ECG gating, lower tube potential, new scanner technology including wide detector array and high pitch dual source spiral CT. In addition, radiation dose can be further reduced by using adaptive statistical iterative

reconstruction (IR), which aids in reducing noise level of low-dose acquisitions. These dose saving techniques have been widely adopted and currently, CCTA would involve low dose radiation of 2-3 mSv. More recent studies have demonstrated image acquisition with “ultra-low” radiation dose of <1 mSv and the impact of reduced dose and IR were analyzed by subjective image quality and noise parameters. However, beyond the study of coronary lumen, the effect of very low radiation on the study of plaques, vessel wall and its application in novel CT techniques such as CT myocardial perfusion and CT fractional flow reserve is necessary. Furthermore, the incremental clinical benefit of very low vs. low dose radiation (e.g., <1 vs. 2-3 mSv) is unclear.

Qualitative assessment of coronary plaque and stenosis assessment—comparison with ica

ICA is established in the assessment of coronary arteries and in the measurement of severity of luminal stenosis. There are several studies that have compared the diagnostic accuracy of CCTA to ICA, based on visual assessment using a binary approach in classifying lumen stenosis as <50% or ≥50%. The 64 detector CCTA identified significant coronary artery stenosis with a sensitivity of 85-99%, specificity of 64-90% and a negative predictive value of 83-99% when compared to ICA in three large multicentre studies. These patients had low to intermediate risk of CAD. In a meta-analysis comprising 7,516 patients with suspected and known CAD in 89 studies, the per-patient sensitivity and specificity for >16 slice CCTA was 98% and 89%, respectively.

Furthermore, there was excellent interobserver and intraobserver agreement for stenosis ratings in high quality images. These studies demonstrate that among all other non-invasive imaging modalities, CCTA most closely resembles ICA in terms of providing coronary assessment. Accordingly current European and US guidelines advocate the use of CT in patients with low to intermediate risk of CAD with a class IIa and IIb indication. In addition, since 2010, the ACC/AHA appropriate use criterion has recommended that it is appropriate to use CCTA as an upfront investigation in this population

Quantitative assessment of atherosclerotic plaques Comparison with ivus

CCTA provides vessel lumen geometry and volumetric assessment of plaque which had previously been obtained only on IVUS. Geometric parameters including minimal lumen area, minimal luminal diameter, diameter stenosis and area stenosis can be quantified using dedicated computed software. Furthermore, the total volume of plaque in a coronary segment, defined as the volume between the vessel lumen and outer wall, can be determined using a semi-automated method based on software detection of the lumen and outer vessel walls. Plaque area or burden, defined as vessel area- lumen area/vessel area, can be quantified and volume of calcified and non-calcified plaque (NCP) based on relative CT densities can also be derived.

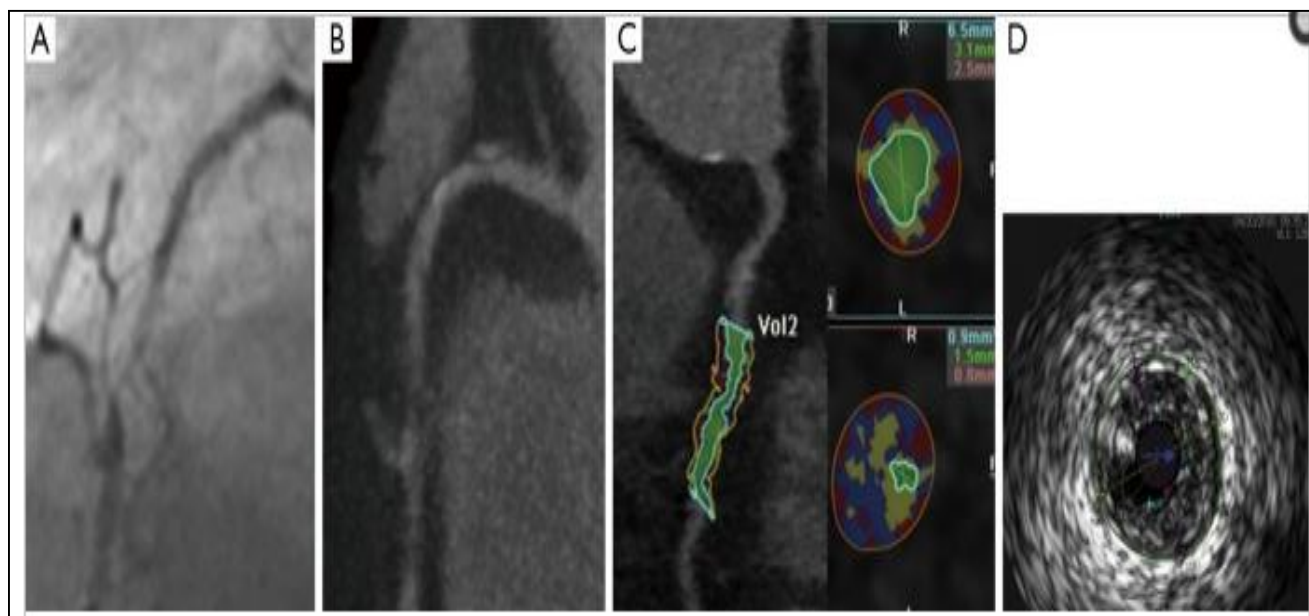


Fig 1: (A) Invasive coronary angiography; (B) CCTA; (C) automated assessment of plaque on CCTA; (D) IVUS assessment of plaque. There is a severe complex lesion in mid RCA. CCTA, coronary computed tomographic angiography; IVUS, intravascular

In a recent meta-analysis by Voros *et al.* including a cohort of 946 patients from 33 studies that compared the accuracy of 64-detector CCTA to IVUS, CCTA was demonstrated to have an excellent sensitivity (94%) and specificity (92%) to qualitatively detect atherosclerotic plaque. Compared to IVUS, CCTA was found to slightly overestimate luminal area (0.46 mm² or by 6.7%; P=0.005), while there was no significant

differences in plaque area (0.09 mm²; P=0.88), volume (5.3 mm³; P=0.21) and percent area stenosis (-1.81%; P=0.12). In addition, two separate studies showed that CCTA underestimated plaque volume in NCPs and overestimated plaque volume in mixed/calcified plaque. The overestimation in calcified plaque is typically related to blooming artefact.

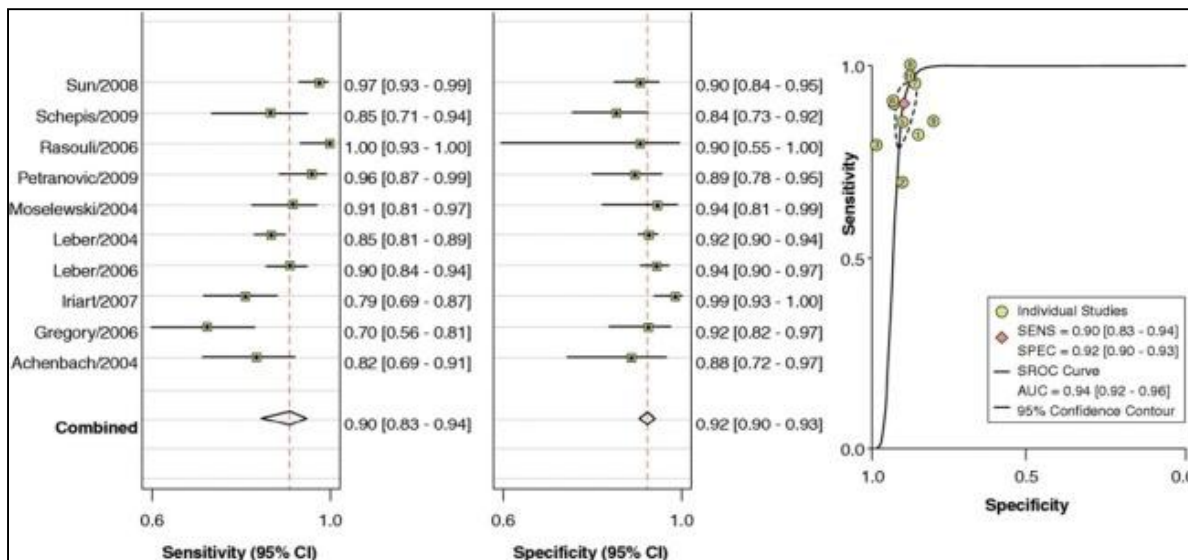


Fig 2: Pooled sensitivity and specificity for CCTA Versus IVUS. Pooled sensitivity and specificity for CCTA vs. IVUS. Adapted from. With permission from Elsevier. CCTA, coronary computed tomographic angiography; IVUS, intravascular ultrasound.

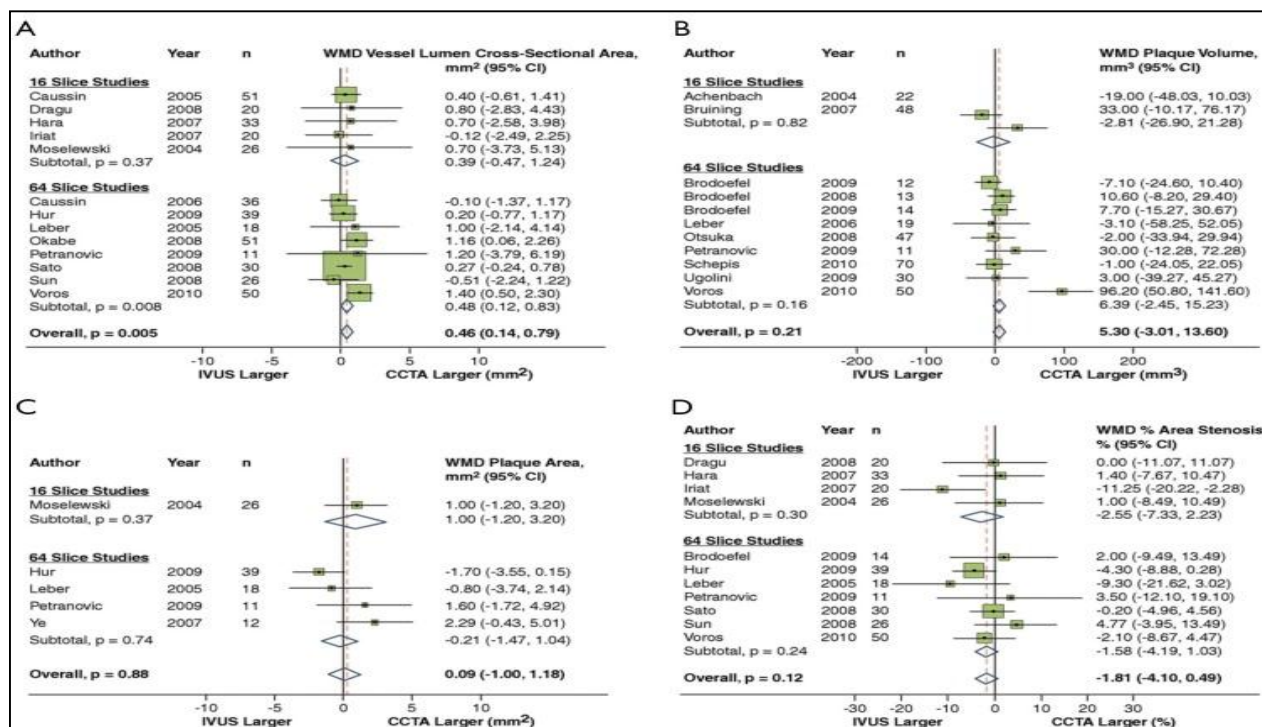


Fig 3: CCTA vs. IVUS to compare vessel lumen area (A), plaque area (B), plaque volume (C) and percent area stenosis (D). With permission from Elsevier. CCTA, coronary computed tomographic angiography; IVUS, intravascular ultrasound.

Albeit the high diagnostic accuracy of CCTA is required to qualitatively assess plaque, its accuracy and reproducibility to quantify plaque is important, as this may determine the potential use of CCTA to non-invasively monitor plaque progression. Two studies have demonstrated that the mean difference in quantifying minimal luminal diameter and minimal luminal area between two experienced observers was small. There was excellent interobserver correlation for quantification of plaque volume with r values ranging between 0.83 and 0.99, although the limits of agreement were wide ranging from 87 to 226%. High quality images were used in these studies and were found to significantly improve reproducibility. The reported mean interobserver difference in

calcified and NCP volume was -0.74% and -0.76% with corresponding limits of agreement of ±23.5% and ±11.5%, respectively in high quality coronary CCTA datasets. Otsuka and colleagues demonstrated that interobserver and intraobserver reproducibility was optimised by exclusion of images with heavy calcification and image blurring.

Assessment of coronary arteries with high calcium score

The “Achilles heel” of cardiac CT is calcification, which hampers diagnostic accuracy by causing blooming artefact. As a result, the specificity of CCTA in calcified vessels is significantly reduced. Recent studies have shown that a higher coronary artery calcium score (CACS ≥400 or ≥600) resulted

in reduction in specificity by 35% to 48%. Therefore, current guidelines do not recommend CCTA for patients with very high CACS. These patients should instead undergo a functional assessment or ICA based on their pre-test probability of CAD. Subtraction algorithms have been developed to be applied on CT images acquired using dual energy CT scanners which may remove calcium and improve the evaluation of coronary artery segments with heavy calcification. Clinical studies examining the utility of this technique to assess CAD are currently underway.



Fig 4: A heavily calcified mid right coronary artery. Due to blooming artefact from calcium, accurate assessment of luminal stenosis is not possible. In addition, this is a poor quality image with motion artefacts which may prohibit accurate image interpretation.

Assessment of coronary artery bypass grafts (CABG)

CCTA is also used to assess coronary bypass grafts with the accuracy being higher in grafts than in native vessels. This superior diagnostic accuracy may be due to larger vessel diameter of the grafts, lower propensity to develop calcified plaque and due to lower motion artefacts in the grafts. In addition, grafts that cannot be detected or accessed by ICA can be visualised with CCTA. The detector CCTA was used in a study to evaluate 52 patients with a mean follow up period of 9.6±7.2 years following CABG surgery. The diagnostic accuracy of CCTA for the detection or exclusion of significant stenosis in arterial and venous grafts on per segment analysis was 100%. The sensitivity and specificity were lower in the distal runoffs and in the native vessels. In a meta-analysis by Hamon *et al.*, the diagnostic accuracy of assessing grafts by 16 and 64 slice CCTA was exceptionally high (sensitivity, 97.6%; specificity, 96.7%; and NPV, 98.9%).

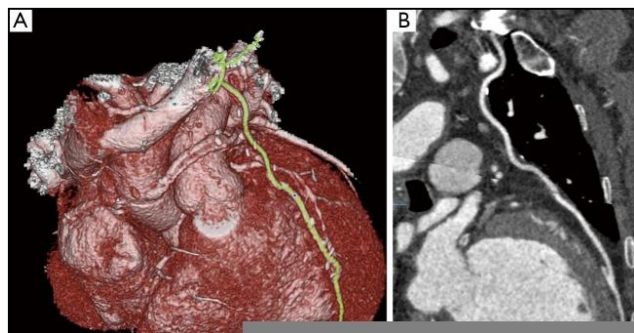


Fig 5: (A) 3D rendered image showing LIMA graft insertion into mid left anterior descending artery; (B) a well opacified LIMA with no obvious stenosis. The insertion of graft into LAD is visible with good distal run off. LIMA, left internal thoracic artery.

Assessment of in-stent restenosis

The evaluation of stents by CCTA is more challenging than that of native coronary arteries. This is predominantly attributable to beam hardening and partial volume artefact from stent struts. It has been demonstrated that a difference in CT density in Hounsfield units (HU) of ≤19% between a reference vessel (aorta) and inside the lumen of a stent, along with a mean CT density of ≥300 inside a stent correlated with a patent stent with high sensitivity and specificity.

According to a meta-analysis, the diagnostic accuracy of 64 slice CCTA for stents was 90%, with sensitivity of 89.7%, specificity of 92.2%, positive predictive value (PPV) of 72.5%, and NPV of 97.4%. When non-assessable segments were included, the sensitivity and specificity significantly decreased to 79% and 81% respectively. The diagnostic accuracy is also influenced by the diameter of the stent. Overall, diagnostic accuracy is significantly higher in stents with diameter ≥3 m. When CCTA was used to evaluate in stent restenosis using IVUS as reference standard, it was demonstrated that the sensitivity, specificity, PPV, NPV, and accuracy were 67%, 78%, 57%, 85%, and 75%, respectively, for stents <3.0 mm in diameter; whereas for stents ≥3.0 mm in diameter, the sensitivity, specificity, PPV, NPV, and accuracy were 89%, 100%, 100%, 97%, and 98%, respectively.

Moreover, the diagnostic performance of CCTA has been found to be superior in stents with thinner struts (<100 µm) compared to stents with thicker struts. Due to these limitations, use of CCTA for evaluation of in stent restenosis is not considered for routine clinical use, except for the assessment of unprotected left main stent. High definition cardiac tomography (HDCT) equipped with superior spatial resolution of 0.23 mm compared to 0.625 mm offered by standard CCTA, may improve the accuracy of CCTA in assessing stents. HDCT improved coronary stent visualization with an increase in luminal stent diameter from 42.3% to 54.1% and area visualization from 25.8% to 54% when compared to standard CCTA in an *ex vivo* phantom model.

In a comparison study of HDCT vs. standard definition CCTA, 25 stents were assessed in 14 patients who were examined by both the scanners on the same day. Partial volume effects were significantly reduced by HDCT resulting in an increase in percentage of stents with no or only minor artefacts, from 44% to 96%.



Fig 6: (A) <3 mm Stent in mid LAD. Partial volume artefact due to stent makes assessment difficult. (B) >3 mm stent in mid RCA. The lumen is well visualised and there is no significant in stent restenosis.

Assessment of plaque progression

While invasive imaging modalities such as IVUS and optical coherence tomography (OCT) have been used to evaluate the efficacy of various anti-atherosclerotic therapies on plaque progression, a non-invasive test would be more assessable and safe. CCTA has been touted as the non-invasive imaging modality to study the surrogate end points for cardiovascular outcomes, such as plaque progression. Several studies have explored this potential.

Zeb *et al.* studied the effect of statin on plaque progression in 100 patients using CCTA with a mean follow up of 406 ± 92 days. Total plaque progression was significantly reduced among subjects on statin compared to those who were not (-33.3 ± 90.5 vs. 31.0 ± 84.5 mm³, $P=0.0006$).

Statin use was associated with reduced progression of NCP volume (-47.7 ± 71.9 vs. 13.8 ± 76.6 mm³, $P<0.001$) and LAP volume (-12.2 ± 19.2 vs. 5.9 ± 23.1 mm³, $P<0.0001$) as quantified on CT. Similar reduction in total plaque volumes and LAP volumes were demonstrated in two other studies in patients on statin therapy. These changes were more pronounced in non-calcified and in mixed plaque. Although these studies highlight the potential use of CCTA to monitor plaque progression/regression, studies comparing CCTA to IVUS in the longitudinal assessment of plaque progression are scarce.

Assessment of the hemodynamic significance of coronary atherosclerosis

Although CCTA accurately assesses coronary plaque and stenosis, it is limited in evaluating the hemodynamic significance of coronary stenosis. As functional significance of coronary stenosis determines prognosis and the need for revascularisation, it is of relevance in the management of patients with stable CAD. Recently, three novel techniques have been demonstrated to accurately detect vessel-specific ischemia using the gold standard invasive fractional flow reserve (FFR) as a reference. They are (I) non-invasive FFR (CT FFR); (II) transluminal attenuation gradient (TAG); and (III) CT perfusion imaging (CTP). These techniques may broaden the use of CCTA to assess coronary ischemia in addition to anatomy.

CT FFR

Non-invasive FFR or CT FFR is derived by applying computational fluid dynamics. Using a supercomputer, three dimensional models throughout the cardiac cycle representing the pressure and flow along all points of the arteries are generated during rest and simulated maximal hyperaemic

conditions. Blood viscosity is assumed to be constant and CT features that affect coronary flow are taken into consideration. Currently, the technique requires 5 hours of processing time and a non-invasive FFR is derived based on approximated pressure measurements. In a multicentre, prospective cohort of 159 vessels in 103 patients, Koo *et al.* demonstrated that CT FFR, using a threshold of ≤ 0.8 , detected FFR-significant (≤ 0.8) stenoses with a sensitivity of 84% and specificity of 82%. Overall, there was a good correlation between CT FFR and FFR ($r=0.72$, $P<0.001$) and the area under the ROC curve (AUC) was 0.90, which was significantly higher than CCTA alone (0.70, $P<0.0001$). A similar improvement in ROC curve was reported when the study was repeated in a larger multicentre prospective cohort of 285 patients. In a recent prospective multicentre study (the NXT trial), diagnostic accuracy, sensitivity and specificity for CT FFR were 81%, 86% and 79% respectively. Again, there was an improvement in ROC curve (CCTA AUC =0.8 vs. FFR CT AUC =0.90, $P=0.0008$).

Trans luminal attenuation gradient (TAG)

TAG is defined as the linear regression coefficient between intraluminal attenuation (HU) and axial distance. TAG evaluates the slope of decline in intraluminal contrast attenuation from the ostium to the distal coronary vessel. Choi *et al.* demonstrated that in a cohort of 127 patients (370 vessels) with multivessel disease, TAG performed on resting CCTA was significantly lower in occluded vessels compared to those with lesions of 0-49% stenosis on quantitative coronary angiography (QCA) (-13.46 ± 9.59 vs. -2.37 ± 4.67 HU/10mm, $P<0.001$). The addition of TAG to the interpretation of CCTA improved diagnostic accuracy for anatomical stenosis severity ($P=0.001$), especially in vessels with calcified lesions and provided a net reclassification improvement of 0.095.

As the 320 detector row scanner allows isophasic, single beat imaging of the entire coronary tree, it was postulated that it would be the ideal platform for TAG assessment. The accuracy and incremental value of TAG on a 320-detector row scanner has been evaluated by Wong *et al.* in a cohort of 53 stable CAD patients. TAG assessed in FFR-significant vessels was significantly lower than that found in FFR non-significant vessels (-21 vs. -11 HU/10mm, $P<0.001$). Using a retrospectively determined TAG320 cut-off of -15.1 HU/10mm, TAG320 was reported to predict FFR ≤ 0.8 with 77% sensitivity and 74% specificity. Importantly, the AUC for the combined use of TAG320 and CCTA was 0.88.

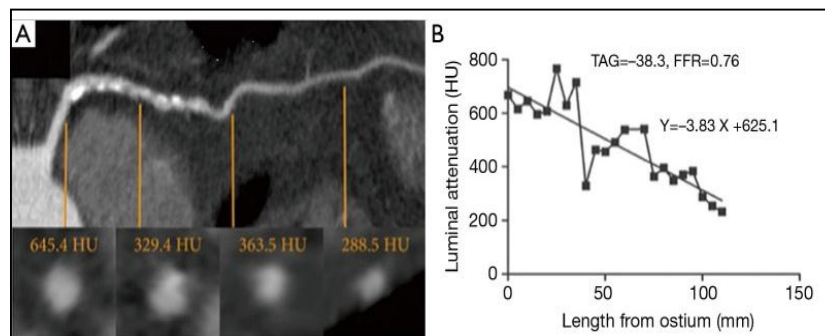


Fig 7: Transluminal attenuation gradient. Left anterior descending artery with significant obstructive plaque burden imaged by CCTA. Axial and representative cross-sectional views with corresponding luminal attenuation (HU) of CCTA. Black square dots represent

Ct stress myocardial perfusion imaging

Myocardial perfusion imaging on CCTA is the acquisition of images during the first pass of iodinated contrast from the arteries into the myocardium where hypo perfusion is represented by hypo-attenuated areas. CTP has been evaluated in numerous single centre studies to date. The sensitivity ranges from 71% to 100% and specificity from 72% to 98% depending on the scanner type and the studied population when compared with single-photon emission computed tomography-myocardial perfusion imaging (SPECT-MPI), invasive FFR and magnetic resonance imaging (MRI) perfusion imaging. In a study by George *et al.*, CTP had a sensitivity of 81% and a specificity of 85% when compared with SPECT-MPI. More recently, in the Core320 study, which is a multicentre study with a cohort of 381 patients, the combined protocol of CCTA and CTP was compared to SPECT-MPI. The sensitivity and specificity for the combined protocol was 80% and 74% respectively. Four studies thus far have compared CTP with FFR, all demonstrating that the use of CTP provided incremental diagnostic accuracy when added to CCTA alone, by increasing the specificity and PPV for FFR-significant stenoses.

Ko *et al.* demonstrated using a 320-detector CT, in a prospective cohort of 40 patients including 120 vessels with suspected CAD, that CCTA detected FFR-significant stenoses (≤ 0.8) with 95% sensitivity and 78% specificity. The additional use of CTP increased the per-vessel specificity to 95% while sensitivity was maintained at 87%. The combined use of CCTA and CTP was associated with an increase in the ROC AUC to 0.93 from 0.85 using CCTA alone ($P=0.0003$).

In a study by Bettencourt *et al.* improved diagnostic accuracy was noted for FFR <0.8 , from 78% using 64 detector CCTA alone, to 85% with combined protocol, which was non inferior to the accuracy of MR perfusion imaging of 88%.

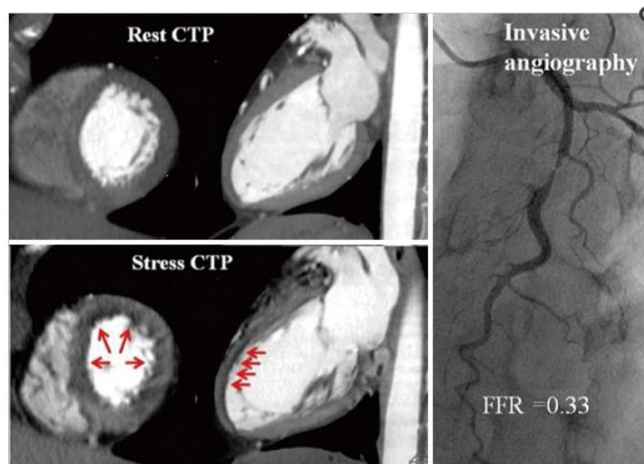


Fig 8: CT perfusion imaging and invasive angiography. Stress perfusion defects are demonstrated on CT in the mid and distal anterior wall corresponding to a severe stenosis in the mid LAD associated with an FFR of 0.33.

Prediction of clinical outcomes using cardiac ct

A number of studies have demonstrated that the presence and burden of calcified plaque as represented by the CACS is associated with an increased risk of future adverse cardiovascular events. A direct relationship was observed between plaque burden and the rate of plaque progression to cardiovascular outcomes in a study that used IVUS to assess

coronary atherosclerotic burden. Similarly, plaque burden assessed by CCTA predicts prognosis. In addition, the location of the lesions, number of vessels with lesions and, the presence of normal, non-obstructive and obstructive vessels determine prognosis.

CCTA meets three fundamental criteria as a good prognostic test:

1. it identifies patients at very low risk for events;
2. it provides definition of clear gradations of risk based on test results; and
3. it enables the concentration of resources in management of patients with abnormal tests.

Presence of non-obstructive disease predicts prognosis

Lin *et al.* demonstrated that the presence of non-obstructive coronary artery stenosis ($<50\%$) on CCTA was associated with higher mortality [hazard ratio (HR) =1.98, $P=0.03$] when compared with normal findings. The highest risk was among those who had non-obstructive CAD in three epicardial vessels (HR =4.75, $P=0.0002$) and ≥ 5 coronary segments (HR =5.12, $P=0.0002$) in a cohort of 2,583 symptomatic patients with mean follow up of 3.1 years. Importantly the higher mortality for non-obstructive disease was observed even in patients with low 10-year Framingham risk (3.4%, $P<0.0001$), as well as those with no traditional, medically treatable cardiovascular risk factors including diabetes mellitus, hypertension and dyslipidemia (5.7%, $P<0.0001$).

Presence of normal findings predicts prognosis

Lastly, normal findings on CCTA were found to be associated with very low event rates. This is comparable to the background event rate among healthy low-risk individuals ($<1\%$) and is similar to that reported in patients with normal stress testing evaluated on echocardiography or nuclear myocardial perfusion imaging.

In a more recent study that assessed the prognostic value of CCTA in 218 patients with a median follow up period of 6.9 years, the outcome was progressively worse in patients with non-obstructive and obstructive disease. Patients with normal coronary arteries on CCTA had excellent prognosis.

Ct plaque quantification predicts prognosis

Versteijlen *et al.* demonstrated that the use of a semi-automated plaque quantification algorithm may provide additional prognostic value in prediction of future ACS beyond conventional CT assessment of stenosis alone and Framingham risk scores. At a mean 26 ± 10 months, patients with ACS were found to have higher total plaque volume (94 vs. 29 mm^3 , $P<0.001$), NCP volume (28 vs. 4 mm^3 , $P<0.001$) and plaque burden (57% vs. 36%, $P<0.01$).

CCTA-ACS

Predicting ACS

There is growing evidence to suggest that the susceptibility of an individual to develop an acute coronary event is determined by plaque morphology rather than the extent of luminal stenosis. In the COURAGE study, where patients who received optimal medical management, the consistent predictor of death, myocardial infarction and non-ST segment elevation ACS was the anatomic burden and not the ischemic burden. The occurrence of major adverse clinical outcomes may be because of the disruption rather than by the ischemia-

producing nature of obstructive plaques. In this context, the prognostic significance of CCTA assumes importance as it has the advantage of being a noninvasive test that can be used to assess individual plaque characteristics apart from the assessment of luminal stenosis.

CCTA features of lap, positive remodelling and spotty calcification predict ACS

Motoyama *et al.* compared CCTA features of 38 patients with ACS to 33 patients with stable angina. Plaques in ACS group had higher frequency of NCP <30 HU (79% vs. 9%, $P<0.0001$), spotty calcification (63% vs. 21%, $P=0.0005$) and positive remodelling (87% vs. 12%, $P<0.0001$). Presence of all three features showed a high PPV, and their absence demonstrated a high negative predictive value for future ACS. Furthermore, mean plaque volumes were higher in ACS group (192.8 ± 114.9 vs. 103.8 ± 51.8 mm³, $P=0.001$) in a stable angina group in another study.

It has been shown in pathological studies, that the size of necrotic core in TCFAs ranges from 1.6 to 1.7 mm² with a length of 8 mm (range, 2-17 mm), and in ruptured plaques ranges from 2.2 to 3.8 mm² with a length of 9 mm (range, 2.5-22 mm). Imazeki and colleagues demonstrated that remodeling detected on CCTA correlated with IVUS and remodeling index (RI) was significantly larger in patients with ACS (1.19 ± 0.18) than in those with stable angina (0.89 ± 0.10 , $P<0.0001$).

Pathological studies have established a relationship between positive vessel remodeling and plaque vulnerability, showing an increase in inflammatory marker concentrations, larger lipid cores, paucity of smooth muscle cells, and medial thinning in positively remodeled vessels.

In a large prospective study with a cohort of 1,059 patients, Motoyama *et al.* demonstrated that the CT angiographic features of LAP and positive remodeling were associated with subsequent development of acute coronary events. ACS developed in 10 (22%) of 45 patients who had these two CT features against 4 (0.5%) in 820 patients who did not have LAP or positive remodeling. None of the 167 patients with normal CCTA sustained acute events ($P<0.001$). Both features were independent predictors of acute coronary events [HR =23, 95% confidence interval (CI): 7-75, $P<0.001$]. Importantly, the plaques associated with early ACS when compared with late ACS had larger LAP volume.

CCTA features of napkin ring sign, plaque ulceration and intraplaque dye penetration predict ACS

Vulnerable or rupture prone atherosclerotic plaques have histologically been described as TCFA, distinguished by a large necrotic core with an overlying thin intact fibrous cap, macrophage infiltration and often increased number of intra plaque vasa vasorum. Pathological studies have demonstrated the thickness of the fibrous cap thickness is the most important plaque characteristic to identify plaque vulnerability, followed by the magnitude of macrophage inflammation and the size of necrotic core.

Kashiwagi and colleagues proposed that the presence of a ring-like attenuation in a CT angiographic cross section may be a surrogate marker of TCFAs after comparing OCT and CCTA findings. In a total of 100 patients with ACS, coronary lesions were divided into TCFA and non-TCFA group based on OCT findings. CCTA-verified positive remodeling was observed more frequently in the TCFA (75%) than in the non-TCFA

group (30%, $P<0.001$). The TCFA group also demonstrated LAP more frequently; CT attenuation value in the TCFA group (35 ± 32 HU) was significantly lower than the non-TCFA group (62 ± 34 HU, $P<0.001$). Notably a ring-like attenuation in the TCFA group was found to be 11-fold more frequent than in the non-TCFA group (44% vs. 4%, $P<0.001$).

The sensitivity, specificity, PPV, and negative predictive value of ring-like enhancement for detecting TCFA are 44%, 96%, 79%, and 85%, respectively. In another study by Tanaka and colleagues, 67 patients with de novo angina were divided into a plaque rupture group (n=27) and a non-rupture group (n=40) based on the IVUS. The 64-slice CCTA revealed that the prevalence of an ulcer-like enhancement space (37% vs. 5%, $P<0.01$), a ring-like sign (41% vs. 18%, $P=0.04$), in the plaque rupture group was higher than those in the non-rupture group. It is postulated that the ring like enhancement represents highly active vasa vasorum neovascularisation.

Vasa vasorum density is seen as surrogate marker of plaque vulnerability as it strongly correlated with macrophage infiltration in atherosclerotic plaque. In addition, it has also been postulated that the ring-like enhancement may be due to large central lipid core surrounded by fibrous plaque tissue or intra mural thrombus. Lastly, CT feature of plaque disruption including plaque ulceration and intraplaque dye penetration in patients with unstable angina, have been described to be modestly sensitive (53-81%) and highly specific (82-95%) for plaque erosion and/or intraplaque haemorrhage as demonstrated on invasive angiography.

Madder *et al.* demonstrated that in 294 plaques with >25% stenosis on CCTA, 37% had features of disruption, including 27% with intraplaque dye penetration and 18% with ulceration. In addition, when compared with non-disrupted lesions, they were more voluminous (313 ± 356 vs. 18 ± 93 mm³, $P<0.0001$) and were more often complex by ICA (57.8% vs. 8.1%, $P<0.0001$).

Use of CCTA in the assessment of acute chest pain in emergency departments (EDS)

Acute chest pain is one of the leading symptoms in ED all over the world. Exclusion of ACS is difficult when patients with typical chest pain have normal initial ECG and biomarkers. The standard evaluation of these patients includes hospital admission to undergo serial ECG's, troponin assessment with or without additional stress testing and only a minority of such patients are eventually diagnosed with cardiac ischemia. Despite this expensive and comprehensive approach, 2% to 5% of ACS is still missed. The high sensitivity and negative predictive value of CCTA for the detection of coronary stenosis allows safe rule-out of CAD, especially in population with low to intermediate risk.

Use of CCTA in ED

CCTA has been studied in comparison with ICA for detection of ACS in several observational cohort studies. The Rule Out Myocardial Infarction/Ischemia Using Computer Assisted Tomography (ROMICAT) study, found that CCTA had excellent sensitivity and negative predictive value to rule out ACS in 368 subjects with inconclusive clinical evaluation of chest pain in ED.

Hollander *et al.* demonstrated that 84% of 568 patients with potential ACS and low Thrombolysis In Myocardial Infarction (TIMI) risk score, were discharged after CCTA.

Compared to standard evaluation, when CCTA was included in triaging patients who presented with chest pain to ED, there was a reduction in the length of stay in hospital and increased discharge rates from ED without hospitalization. These studies demonstrate that CCTA is an efficient and safe tool to assess patients with chest pain, particularly those with low to intermediate likelihood of CAD. In a meta-analysis of 64-detector CCTA, which included 1,559 patients presenting with chest pain, CCTA had a 99.3% negative predictive value in excluding major adverse cardiac events (MACE) for 30 days after initial symptom presentation in 85.2% of the study population. The ROMICAT and CT-STAT studies showed that the absence of significant coronary atherosclerosis is associated with the absence or a minimum number of MACE at 6 months of follow-up.

Nasis *et al.* followed up 506 patients without plaque, patients with nonobstructive plaque and at most mild to moderate stenosis (<40% luminal narrowing). These patients were discharged from ED without further investigation and some of them, after a single troponin measurement. At median 47.4-month follow-up there were no major adverse events (0% for all; 95% CI: 0-0.7%).

Conclusions

Coronary CT angiography provides robust non-invasive, qualitative and quantitative assessment of coronary atherosclerosis with high reproducibility and accuracy. The constant advances in scanner technology; image acquisition and reconstruction techniques have expanded the use of CCTA. In addition to the anatomical information, it is now possible to assess the hemodynamic significance of atherosclerotic plaque and to predict clinical outcomes based on plaque burden and plaque morphology.

The overall admission rate was lower with CCTA (14% vs. 40%; $P < 0.001$). Standard evaluation was associated with a 5.5-fold greater risk for admission [odds ratio (OR): 5.53; $P < 0.001$], 1.6 times longer expected ED length of stay (OR: 1.55; $P < 0.001$), 5 times greater likelihood of returning to ED with chest pain within 30 days (OR: 5.06; $P = 0.022$) and a 7-fold greater likelihood of ICA without revascularization (OR: 7.17; $P < 0.001$). There were no differences in the rates of death and acute myocardial infarction within 30 days of the index visit between the two groups. CCTA was found to be cost-effective compared to myocardial perfusion imaging. In a comprehensive cost-effectiveness model by Ladapo *et al.*, the increased overall cost of CCTA due to detection of CAD was partially offset by reduction of event rates by 3% and by lower costs of care for myocardial infarction and stroke.

References

1. Go AS, Mozaffarian D, Roger VL *et al.* Executive summary: heart disease and stroke statistics--2013 update: a report from the American Heart Association. *Circulation*. 2013; 127:143-52.
2. Mallika V, Goswami B, Rajappa M. Atherosclerosis pathophysiology and the role of novel risk factors: a clinicobiochemical perspective. *Angiology*. 2007; 58:513-22.
3. Narula J, Finn AV, Demaria AN. Picking plaques that pop. *J Am Coll Cardiol*. 2005; 45:1970-3.

4. Muller JE, Abela GS, Nesto RW *et al.* Triggers, acute risk factors and vulnerable plaques: the lexicon of a new frontier. *J Am Coll Cardiol*. 1994; 23:809-13.
5. Ehara S, Kobayashi Y, Yoshiyama M *et al.* Spotty calcification typifies the culprit plaque in patients with acute myocardial infarction: an intravascular ultrasound study. *Circulation*. 2004; 110:3424-9.
6. Schoenhagen P, Ziada KM, Kapadia SR *et al.* Extent and direction of arterial remodeling in stable versus unstable coronary syndromes: an intravascular ultrasound study. *Circulation*. 2000; 101:598-603.
7. Raff GL, Gallagher MJ, O'Neill WW *et al.* Diagnostic accuracy of noninvasive coronary angiography using 64-slice spiral computed tomography. *J Am Coll Cardiol*. 2005; 46:552-7.
8. Pundziute G, Schuijf JD, Jukema JW *et al.* Evaluation of plaque characteristics in acute coronary syndromes: non-invasive assessment with multi-slice computed tomography and invasive evaluation with intravascular ultrasound radiofrequency data analysis. *Eur Heart J*. 2008; 29:2373-81.
9. Miller JM, Rochitte CE, Dewey M *et al.* Diagnostic performance of coronary angiography by 64-row CT. *N Engl J Med*. 2008; 359:2324-36.
10. Bischoff B, Hein F, Meyer T *et al.* Impact of a reduced tube voltage on CT angiography and radiation dose: results of the PROTECTION I study. *JACC Cardiovasc Imaging*. 2009; 2:940-6.
11. Hausleiter J, Meyer T, Hermann F *et al.* Estimated radiation dose associated with cardiac CT angiography. *JAMA*. 2009; 301:500-7.
12. Chen MY, Shanbhag SM, Arai AE. Submillisievert median radiation dose for coronary angiography with a second-generation 320-detector row CT scanner in 107 consecutive patients. *Radiology*. 2013; 267:76-85.
13. Achenbach S, Marwan M, Ropers D *et al.* Coronary computed tomography angiography with a consistent dose below 1 mSv using prospectively electrocardiogram-triggered high-pitch spiral acquisition. *Eur Heart J*. 2010; 31:340-6.
14. Leipsic J, Labounty TM, Heilbron B *et al.* Estimated radiation dose reduction using adaptive statistical iterative reconstruction in coronary CT angiography: the ERASIR study. *AJR Am J Roentgenol*. 2010; 195:655-60.
15. Schoenhagen P, Baker ME. Our preoccupation with ultra-low dose radiation exposure. Low contrast resolution and cardiovascular CT imaging. *J Cardiovasc Comput Tomogr*. 2014; 8:426-8.